

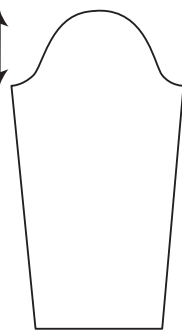
WOODHOUSE

Erika Knight

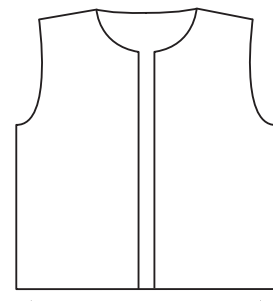


Sample size 81-86 cm (32-34")

13.5 [14: 15.5: 16.5: 18: 19.5: 20: 20.5: 21.5] cm
(5¼ [5½: 6: 6½: 7: 7¾: 8: 8½] in)



45 [46: 46: 47: 47: 47: 47] cm
(17¾ [18: 18½: 18½: 18½: 18½: 18½: 18½] in)



51 [53: 55: 57: 59: 61: 62: 64: 65] cm
(20 [20¾: 21¼: 22¼: 23¼: 24: 24¼: 25¼: 25½] in)

43.5 [49: 54.5: 60: 64.5: 70: 74.5: 80: 84.5] cm
(17 [19¼: 21½: 23½: 25½: 27½: 29¼: 31½: 33¼] in)

SIZE

To fit chest (cm/in)

71-76	81-86	91-97	102-107	112-117	122-127	132-137	142-147	152-157
28-30	32-34	36-38	40-42	44-46	48-50	52-54	56-58	60-62

Actual chest measurement of garment

87.5	98	109	120	129	140	149	160	169
34½	38½	43	47¼	50¾	55	58¾	63	66½

YARN

Felted Tweed (50gm)

7	8	9	10	10	11	12	13	14
---	---	---	----	----	----	----	----	----

(photographed in Ancient 172)

NEEDLES

1 pair 3¾mm (no 9) (US 5) needles

1 pair 4mm (no 8) (US 6) needles

Additional 4mm (no 8) (US 6) needle for joining shoulder seams

BUTTONS – 6 x TGB4989 (black coated metal 20mm) from Textile Garden. Please see information page for contact details.

TENSION

22 sts and 30 rows to 10 cm measured over st st using 4mm (US 6) needles.